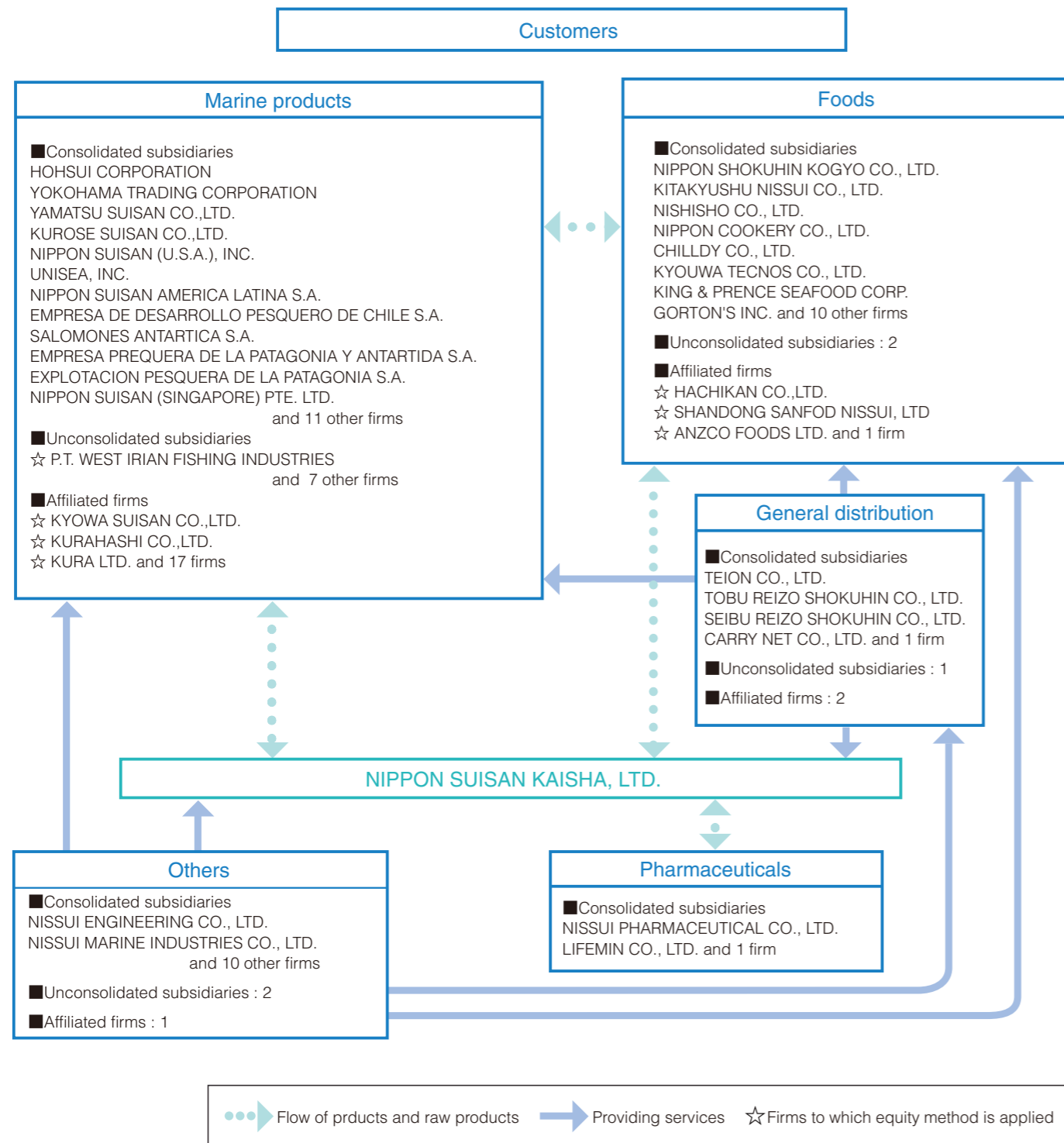


Group Firms



(As of September, 2006)

Name	Address	Main business	Rate of voting right holders (%)
● Consolidated subsidiary			
HOHSUI CORPORATION	Chuo-ku, Tokyo	Marine products	63.2
NISSUI PHARMACEUTICAL CO., LTD.	Taito-ku, Tokyo	Pharmaceuticals	60.6
NISSUI SHIPPING CORPORATION	Chuo-ku, Tokyo	General distribution	100.0
TEION CO., LTD.	Hakodate-shi, Hokkaido	General distribution	100.0
TOBU REIZO SHOKUJIN CO., LTD.	Hachioji-shi, Tokyo	General distribution	100.0
SEIBU REIZO SHOKUJIN CO., LTD.	Fukuoka-shi, Fukuoka	General distribution	100.0
CARRY NET CO., LTD.	Nagoya-shi, Aichi	General distribution	100.0
NIPPO SHOKUJIN KOGYO CO., LTD.	Kumamoto-shi, Kumamoto	Foods	99.9
NIPPON COOKERY CO., LTD.	Atsugi-shi, Kanagawa	Foods	100.0
CHILLDY CO., LTD.	Hachioji-shi, Tokyo	Foods	100.0
NISHISHO CO., LTD.	Fukuoka-shi, Fukuoka	Foods	100.0
KYOUWA TECNOS CO., LTD.	Sanbu-gun, Chiba	Foods	80.0
KITAKYUSHU NISSUI CO., LTD.	Kita-Kyushu-shi, Fukuoka	Foods	100.0
YOKOHAMA TRADING CORPORATION	Yokohama-shi, Kanagawa	Marine products	91.0
YAMATSU SUISAN CO., LTD.	Niigata-shi, Niigata	Marine products	50.0
KUROSE SUISAN CO., LTD.	Kushima-shi, Miyazaki	Marine products	100.0
NISSUI ENGINEERING CO., LTD.	Chiyoda-ku, Tokyo	Others	100.0
NISSUI MARINE INDUSTRIES CO., LTD.	Kita-Kyushu-shi, Fukuoka	Others	100.0
NIPPON SUISAN (U.S.A.), INC.	Redmond, U.S.A.	Marine products	100.0
UNISEA, INC.	Redmond, U.S.A.	Marine products	100.0
EMDEPES	Santiago, Chile	Marine products	55.0
SALOMONES ANTARTICA S.A.	Dalcahue, Chile	Marine products	100.0
N.A.L.	Santiago, Chile	Marine products	100.0
PESPASA	Buenos Aires, Argentina	Marine products	100.0
PESANTAR	Ushuaia, Argentina	Marine products	100.0
GORTON'S INC.	Massachusetts, U.S.A.	Foods	100.0
K&P	Georgia, U.S.A	Foods	100.0
35 other firms			
● Firms to which equity method is applied			
KYOUWA SUISAN CO., LTD.	Sakaiminato-shi, Tottori	Marine Products	35.0
KURAHASHI CO., LTD.	Fykuyama-shi, Hiroshima	Marine Products	36.0
HACHIKAN CO., LTD.	Hachinohe-shi, Aomori	Foods	40.0
KURA LTD.	Wellington, New Zealand	Marine products	50.0
SHANDONG SANFOD NISSUI, LTD.	Shandong, China	Foods	40.0
29 other firms			

Company Overview

Nippon Suisan Kaisha, Ltd.

Nippon Bldg., 2-6-2, Otemachi, Chiyoda-ku, Tokyo 100-8686 Japan

Founded 1911

Established 1943

Capital 23,729 million yen

Number of Shares Authorized 1,000,000,000

Number of Shares Issued 277,210,277

Number of Shareholders 40,562

Number of Employees 1,174 (Non-consolidated) 8,298 (Consolidated)

Fiscal Year From April 1 to March 31

Stock Exchange Listings Tokyo and Osaka (common stock)

General Shareholders' Meeting in June

Record Date

(1) Annual Meeting & Dividends on March 31

(2) Interim Dividends on September 30

Minimum Trading Unit 100 shares

Transfer Agent for Common Stock The Chuo Mitsui Trust and Banking Company,
Limited 3-33-1 Shiba, Minato-ku, Tokyo, Japan

(As of March 31, 2006)

Contact

Public Relations & Investor Relations Department

+81-3-3244-7101

ir@nissui.co.jp

<http://www.nissui.co.jp/english/ir/index.html>

Earning Releases, briefing materials, financial data, and the press releases, etc.
are available on the web-site.

Cautionary Notes

This annual report contains forward-looking statements regarding Nissui's business projections such as plans, outlook, strategies and results for the future. All forward-looking statements are based on judgments derived from the information available to the Group at the time of publication.

Please be advised that the actual business performance may differ from these business projections due to various factors. Significant factors which may affect the actual business performance include but are not limited to the economic climate surrounding the business sectors in which Nissui and its subsidiaries and affiliates operate, market trends, foreign exchange rates (notably the exchange rate between the U.S. dollar and Japanese yen) and the Japanese stock market.