

Company Overview

Nippon Suisan Kaisha, Ltd.

Nippon Bldg., 2-6-2, Otemachi, Chiyoda-ku, Tokyo 100-8686 Japan

Founded 1911

Established 1943

Capital 23,729 million yen

Number of Shares Authorized 1,000,000,000

Number of Shares Issued 277,210,277 (Including 696,331 shares of treasury stock)

Number of Shareholders 36,118

Number of Employees 1,176(Non-consolidated) 7,764(Consolidated)

Fiscal Year From April 1 to March 31

Stock Exchange Listings Tokyo and Osaka (common stock)

General Shareholders' Meeting in June

Record Date

(1) Annual Meeting & Dividends on March 31

(2) Interim Dividends on September 30

Minimum Trading Unit 100 shares

Transfer Agent for Common Stock The Chuo Mitsui Trust and Banking Company, Limited

3-33-1 Shiba, Minato-ku, Tokyo, Japan

(As of March 31, 2007)

Contact

Public Relations & Investor Relations Department

+81-3-3244-4357

ir@nissui.co.jp

<http://www.nissui.co.jp/english/ir/index.html>

Earning Releases, briefing materials, financial data, and the press releases, etc.

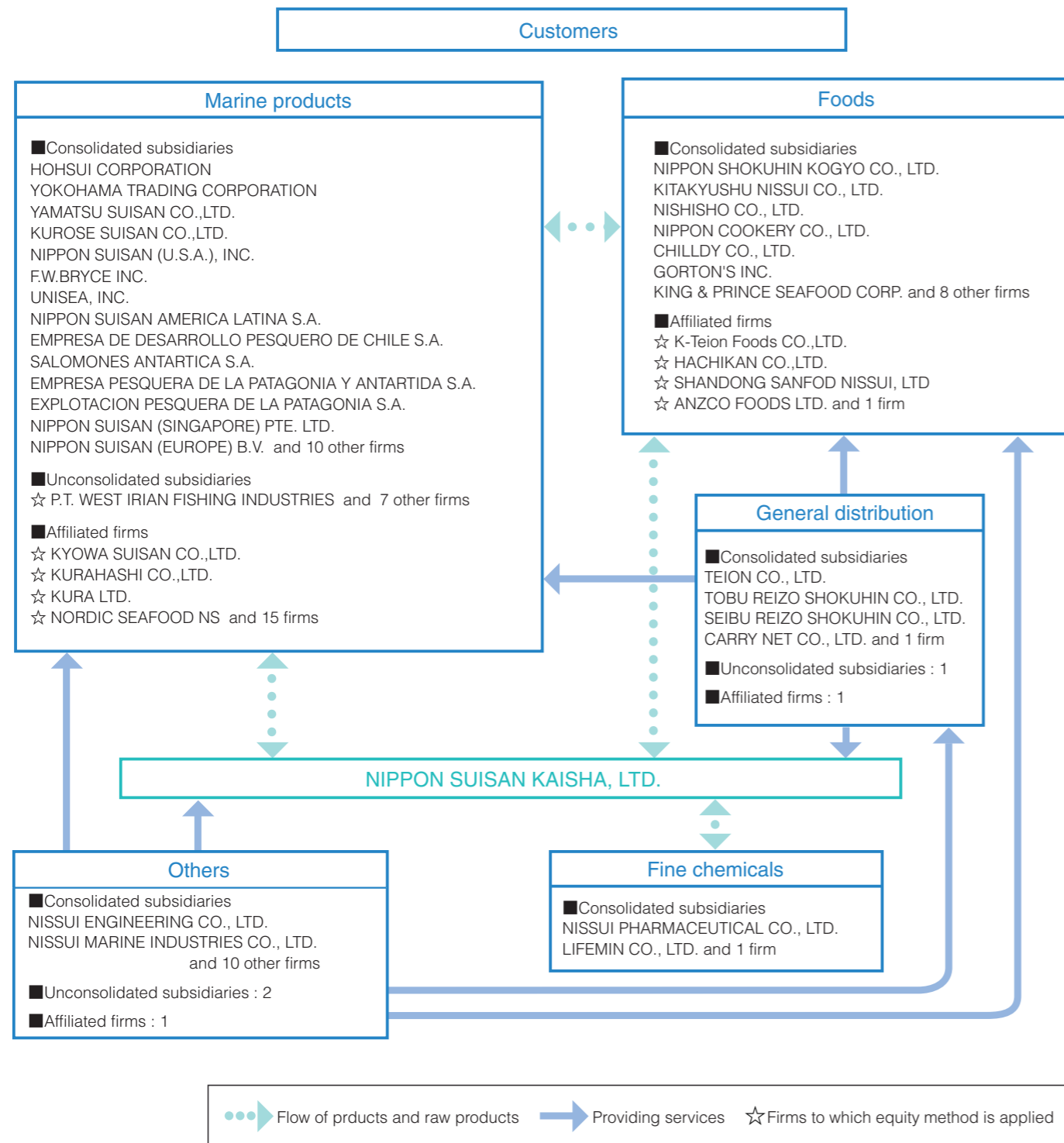
are available on the web-site.

Cautionary Notes

This annual report contains forward-looking statements regarding Nissui's business projections such as plans, outlook, strategies and results for the future. All forward-looking statements are based on judgments derived from the information available to the Group at the time of publication.

Please be advised that the actual business performance may differ from these business projections due to various factors. Significant factors which may affect the actual business performance include but are not limited to the economic climate surrounding the business sectors in which Nissui and its subsidiaries and affiliates operate, market trends, foreign exchange rates (notably the exchange rate between the U.S. dollar and Japanese yen) and the Japanese stock market.

Group Firms



(As of September, 2007)

Name	Address	Main business	Capital fund mil.yen	Rate of voting right holders (%)
●Consolidated subsidiary				
HOHSUI CORPORATION	Chuo-ku, Tokyo	Marine products	2,005	58.3
NISSUI PHARMACEUTICAL CO.,LTD.	Taito-ku, Tokyo	Fine chemicals	4,449	57.8
YOKOHAMA TRADING CORPORATION	Yokohama-shi, Kanagawa	Marine products	251	91.8
YAMATSU SUISAN CO.,LTD.	Niigata-shi, Niigata	Marine products	35	50.0
KUROSE SUISAN CO.,LTD.	Kushima-shi, Miyazaki	Marine products	498	100.0
NIPPO SHOKUJIN KOGYO CO.,LTD.	Kumamoto-shi, Kumamoto	Foods	180	99.9
KITAKYUSHU NISSUI CO.,LTD.	Kita-Kyushu-shi, Fukuoka	Foods	108	100.0
NISHISHO CO.,LTD.	Fukuoka-shi, Fukuoka	Foods	50	100.0
NIPPON COOKERY CO.,LTD.	Atsugi-shi, Kanagawa	Foods	1,450	100.0
CHILLDY CO., LTD.	Hachioji-shi, Tokyo	Foods	98	100.0
TEION CO.,LTD.	Hakodate-shi, Hokkaido	General distribution	210	100.0
TOBU REIZO SHOKUJIN CO.,LTD.	Hachioji-shi, Tokyo	General distribution	124	100.0
SEIBU REIZO SHOKUJIN CO.,LTD.	Fukuoka-shi, Fukuoka	General distribution	450	100.0
CARRY NET CO.,LTD.	Nagoya-shi, Aichi	General distribution	41	100.0
KYOWA TECNOS CO.,LTD.	Sanbu-gun, Chiba	Fine chemicals	125	80.0
NISSUI ENGINEERING CO.,LTD.	Chiyoda-ku, Tokyo	Others	100	100.0
NISSUI MARINE INDUSTRIES CO.,LTD.	Kita-Kyushu-shi, Fukuoka	Others	200	100.0
NIPPON SUISAN (U.S.A.),INC.	Redmond, U.S.A.	Marine products	14,901 thousand US\$	100.0
F.W.BRYCE,INC.	Massachusetts, U.S.A.	Marine products	(14,854) thousand US\$	100.0
UNISEA,INC.	Redmond, U.S.A.	Marine products	3,505 thousand US\$	100.0
N.A.L.	Santiago, Chile	Marine products	42,869 mil.Chile peso	100.0
SALMONES ANTARTICA S.A.	Dalcahue, Chile	Marine products	17,090 mil.Chile peso	55.0
EMDEPES	Santiago, Chile	Marine products	12,956 mil.Chile peso	100.0
PESANTAR	Ushuaia, Argentina	Marine products	26,579 thousand Argentine peso	100.0
PESPASA	Buenos Aires, Argentina	Marine products	32,820 thousand Argentine peso	100.0
NIPPON SUISAN (SINGAPORE.)PTE.LTD.	Singapore	Marine products	42,785 thousand S\$	100.0
NIPPON SUISAN (EUROPE.)B.V.	Amstelveen Netherlands	Marine products	136,134 Euro	100.0
GORTON'S INC.	Massachusetts, U.S.A.	Foods	10 US\$	100.0
K&P	Georgia, U.S.A.	Foods	0.01 US\$	100.0
31 other firms				
●Firms to which equity method is applied				
KYOWA SUISAN CO.,LTD.	Sakaiminato-shi, Tottori	Marine products	95	35.0
KURAHASHI CO.,LTD.	Fykuyama-shi, Hiroshima	Marine products	150	36.0
K-Teion Foods CO.,LTD.	Itami-shi, hyogo	Foods	1,200	33.7
HACHIKAN CO.,LTD.	Hachinohe-shi, Aomori	Foods	100	40.0
KURA LTD.	Wellington, New Zealand	Marine products	397,000 thousand NZ\$	50.0
NORDIC SEAFOOD A/S	Hirtshals Denmark	Marine products	1,650 thousand DKr	35.0
SHANDONG SANFOD NISSUI, LTD.	Shandong, China	Foods	7,000 mil.gen	40.0
26 other firms				